

Calligraphy

(need broad pen)
(filled or fillable)

Project II

Lessons 12 - 14

Art Lesson #209 (page 353):

"Coloring with Tones"

For this assignment the students are going to learn how to make various tones of green. God literally places countless varieties of green in nature, and it can prove to be an excellent study. First, have them read page 353. Then color in the picture with the tree (in the middle of the page) with an assortment of greens along with some other colors. (See how many tones of green they can create in the circles.) When finished, have them go outside and sketch two simple scenes (i.e. a bush or tree) in the figure boxes using contour lines to draw them and a variety of greens.

Pointer #1: Yellow with just a touch of green makes a very important yellow-green, and this color will lighten up a landscape. There is also green + yellow, green + yellow + blue, yellow + blue, green + red, green + black, etc.

Pointer #2: Most students are awkward with doing contour drawings, yet it can be very creative. Have students practice by copying the picture on page 353. Do not lift the pencil from the page. Remember, a contour drawing is not supposed to be realistic, but creative.

Art Lesson #212 (page 357):

“Drawing Atmospheric Perspective”

“Atmospheric Perspective” suggests where land and sky merge together in the distance. A wonderful illustration of this is when it is snowing, and everything in the distance softly merges into one. Have students read page 357 and then lightly draw the picture with their yellow colored pencil in the bottom figure box, placing in the 3 pine trees (A, B, & C) as mentioned and coloring the picture as instructed. Students may want to practice coloring in the 3 pine trees on the top of the page, making the one in the foreground richer and brighter in color and the one in the background duller and lighter in color (light blue, violet, white, and a touch of green).



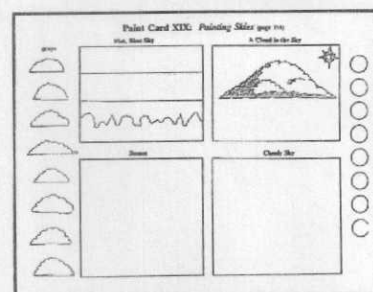
Pointer: As mentioned, a simple way to blend, or soften, colors is by using the broad side of the pencil. Remember, merge the colors of the sky and distant mountains together until they are only vaguely suggested. The outline should be very vague.

Checklist:

- Is there more color in the foreground?
- Is there a variety of greens?
- Did the student suggest the distant mountains to create “atmospheric perspective?”

Beginning Painting/Paint Card #XIX: *“Painting Skies”*

Read page 355 and have the students paint the 4 sky studies in the figure boxes as instructed.



Teacher’s Note: It is difficult to paint out-of-doors since there are many variables like wind, heat, cold, insects, etc. It is also not easy to set materials up

for accommodations. Therefore, students may do best to do the sky study of a cloudy day either from a window or from a preliminary study done with colored pencils. (It is much easier to work outside with colored pencils than with paints.) Students may also have difficulty with painting a sunset sky. If so, have them refer to Lesson #192 (page 326) and follow the same guidelines as painting a rainbow. (However, omit green and add blue to the top of the sky.)

Pointer #1: The next painting lesson, Paint Card XX, will have similar sky studies. If the palettes are not too messy from this lesson, they can be used for the next lesson, too.

Pointer #2: You will need more white paint for this exercise (preferably two puddles instead of one).

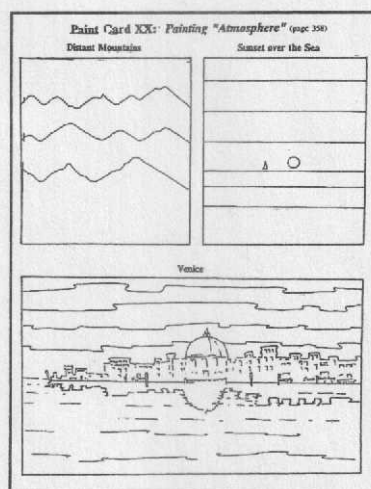
Checklist:

- Did students test their colors in the circles?
- Did students make a very light blue?
- Did the student mix enough paint?
- Did the student keep an organized palette?
- Did students sign painting?

Beginning Painting /Paint Card # XX: "Painting Atmosphere"

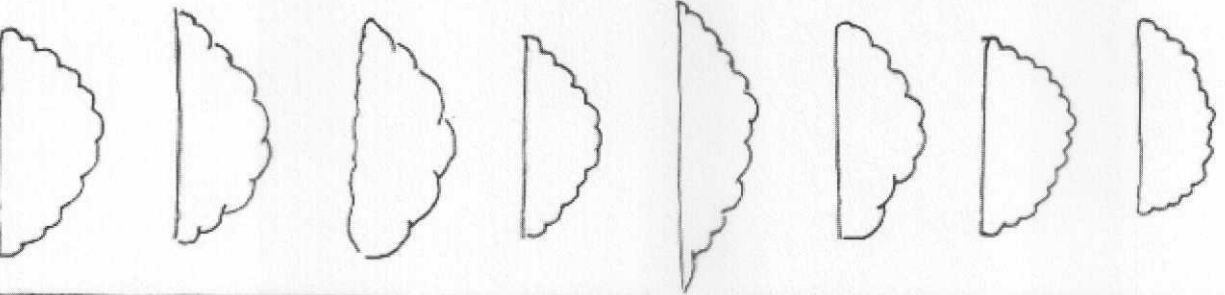
Have students read page 358 and place Paint Card # XX in front of them, following the instructions to complete the lesson.

Pointer: Research Turner's seascapes to see how he merged the sea and sky together to show his magnificent renderings with atmospheric perspective.

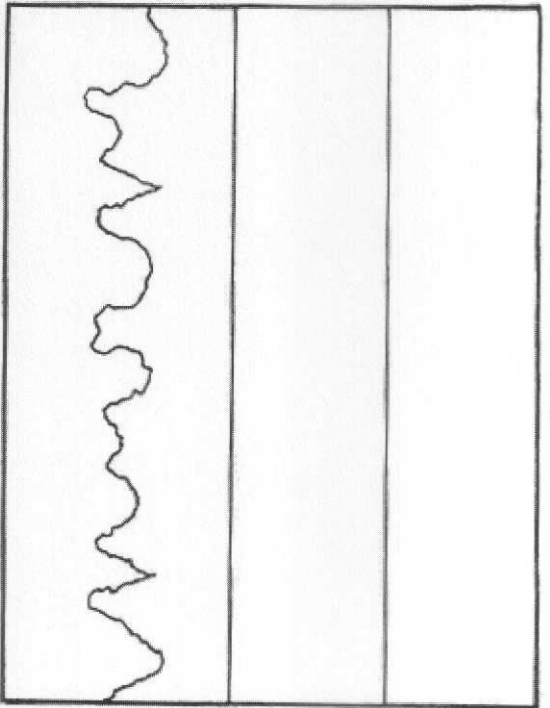


Paint Card XIX: *Painting Skies* (page 355)

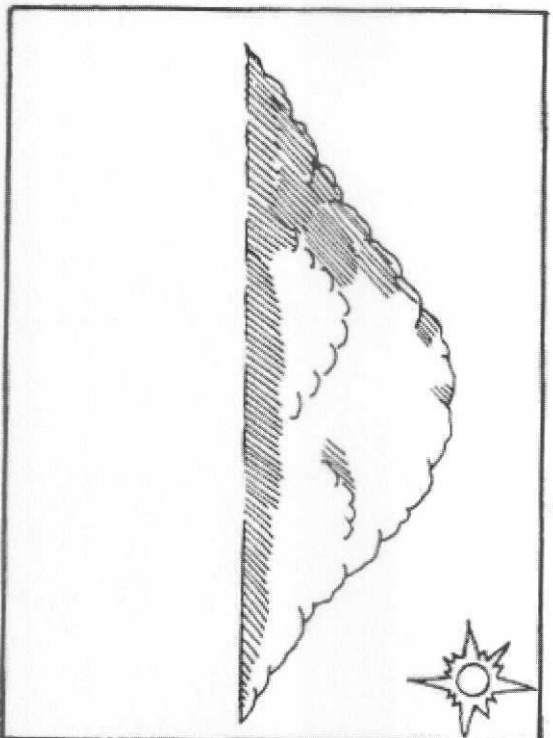
grays



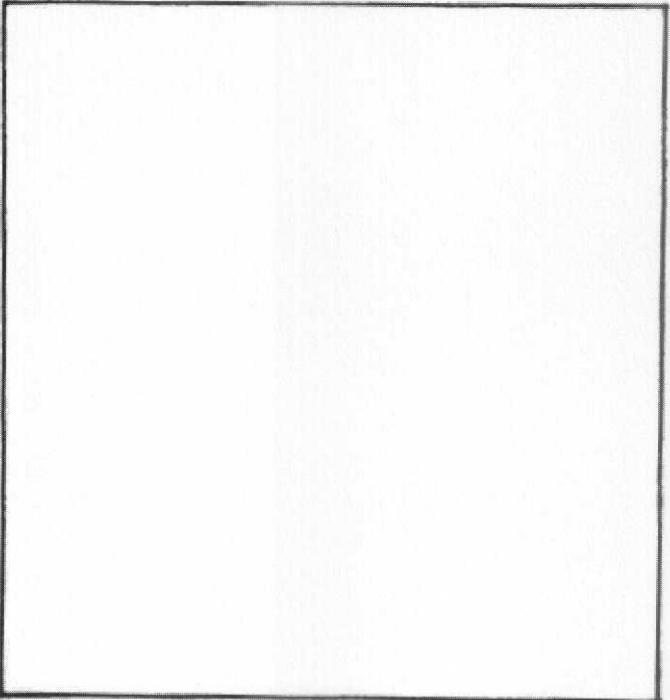
Flat, Blue Sky



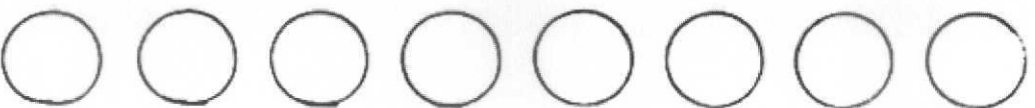
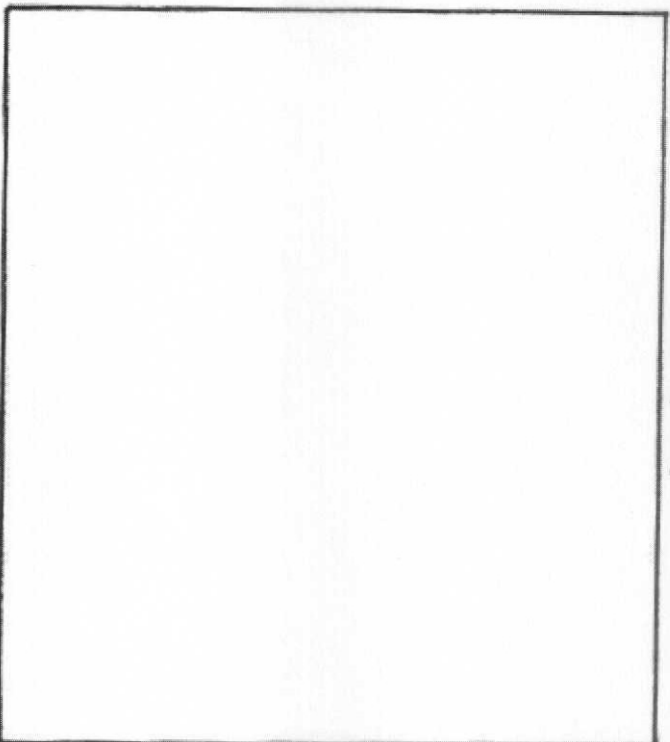
A Cloud in the Sky



Sunset

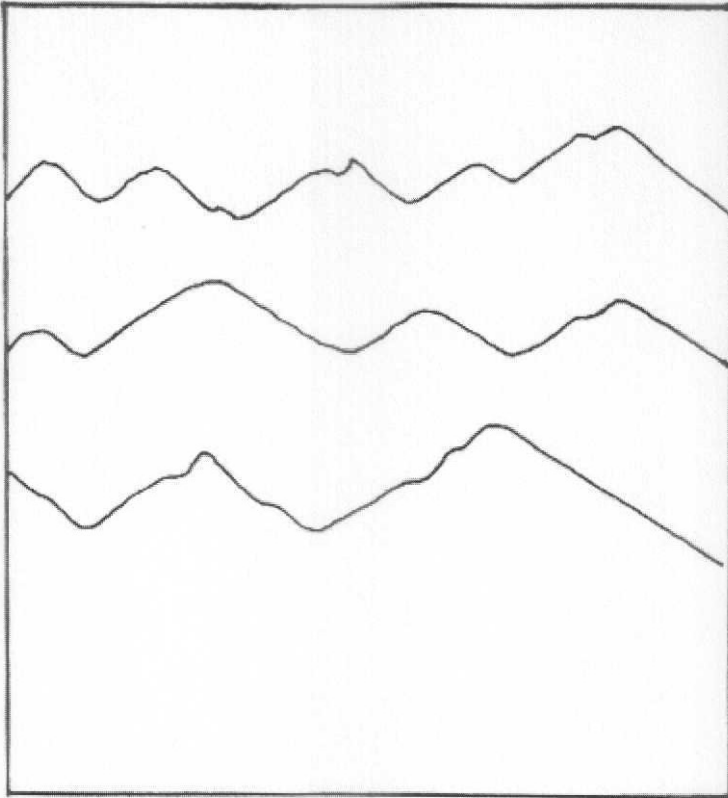


Cloudy Sky

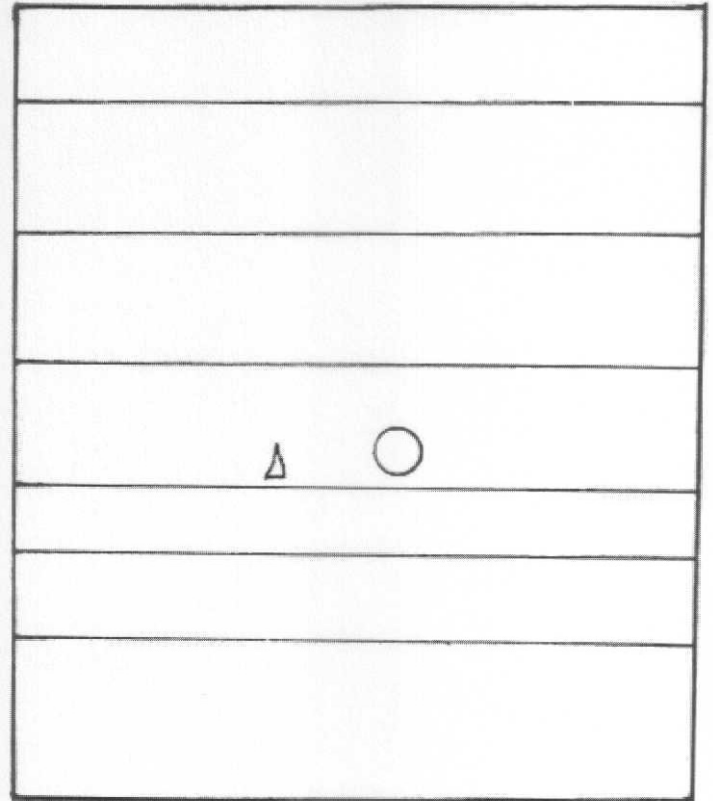


Paint Card XX: *Painting "Atmosphere"* (page 358)

Distant Mountains



Sunset over the Sea



Venice

